

# LLWYNCELYN WIND

## A LOCAL ENERGY SCHEME

**Dear Resident,**

**We informed you some time ago of our plans for Llwyncelyn Wind, a unique energy project that will generate power to be used in the local area. We were granted planning permission in 2017 and I'm delighted to say we will start work shortly, with the installation of the turbines in the middle of 2023.**

This will not only help increase energy security in these uncertain times but also accelerate the process of moving Wales towards Net Zero, all whilst helping to power a greener future for generations to come. The way energy is produced will be very different in the future, as Wales moves away from coal and gas into the electric economy, this change needs to start now to achieve the Wales we want.

We are in continual dialogue with RCT Council about how the energy created by the scheme can be utilised in the best way for the local area, whether this is powering local buildings or helping to create travel networks to reduce the cost of travel. These discussions are ongoing and having identified possible areas and users of the power, we are now working on the feasibility and infrastructure requirements to achieve these aims for local use.

We know energy bills are a huge concern for everyone at the moment, and whilst a number of restrictions mean it is not currently possible to power your homes directly from wind turbines, we hope through projects such as Llwyncelyn Wind and its associated infrastructure we can prepare the system now to make this possible in the future.

To help demonstrate and explain the way energy is produced, we are offering all schools from the local area free educational visits to Parc Stormy, our headquarters in Bridgend. These visits include a tour of the various technology we have on-site and a curriculum-led, taught lesson in our Knowledge Factory, from one of our team of experts. We are delighted that Pontygwaith, Ynyshir and Williamstown Primary have all already taken us up on this opportunity and we hope other schools in the area will be able to join us over the coming months. For anyone interested in a visit, get in touch with our Education Lead, Joanne Goddard, who will be happy to facilitate this.

In line with our commitment to the communities in which we work, we are always looking at ways to support the local area and would welcome contact from anyone who feels their community group or cause would benefit from our support. If you have any queries or questions, please find all our contact information at the end of this brochure.



With very best wishes,

**Martyn Popham**

*Director & Project Lead*



**Neil Tapper**  
*Director -  
Engineering*



**Katherine  
Day**  
*Financial  
Controller*



**Jess King**  
*Projects  
Coordinator*



**Reuben Hamon**  
*Project Designer*



**Paul Kelliher**  
*Legal Contracts &  
Administration  
Manager*



**Joanne Goddard**  
*Education Lead*

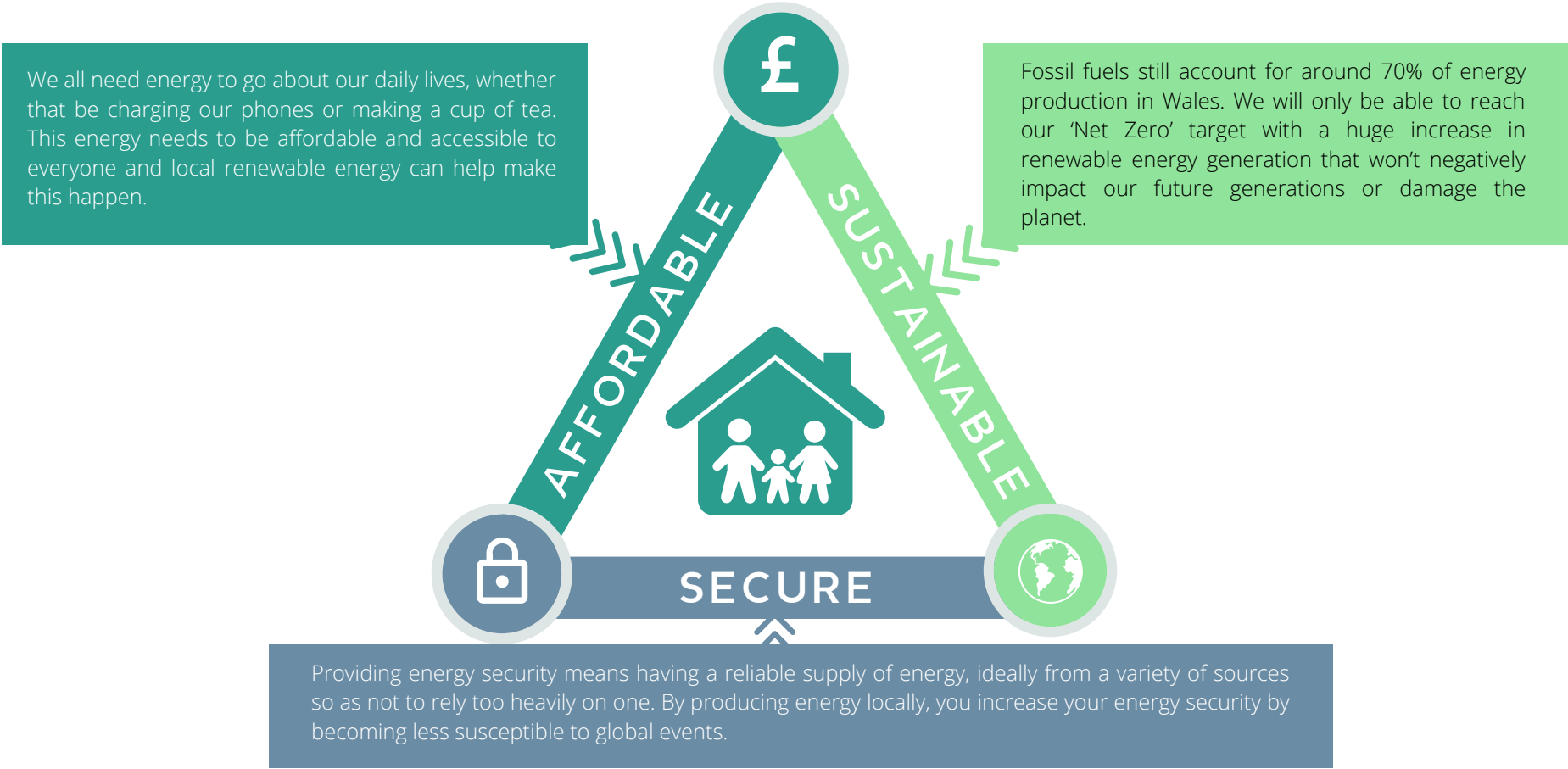


# WHY DO WE NEED PROJECTS LIKE LLWYNCELYN WIND?

In these uncertain times in which we currently find ourselves, energy prices have soared, the security of global energy supply has been disrupted by the war in Ukraine, and everyone is becoming increasingly aware of the Climate Emergency and the need to reduce our carbon footprint.

Our aim, as a responsible local developer, is to assess these challenges and find the optimum balance between them, ensuring the best results are delivered for the areas in which we operate and the wider community.

Balancing these three challenges is what's commonly known as the **Energy Trilemma**, and as a conscientious developer, we will always find what we believe to be the best output possible for the communities in which we operate.

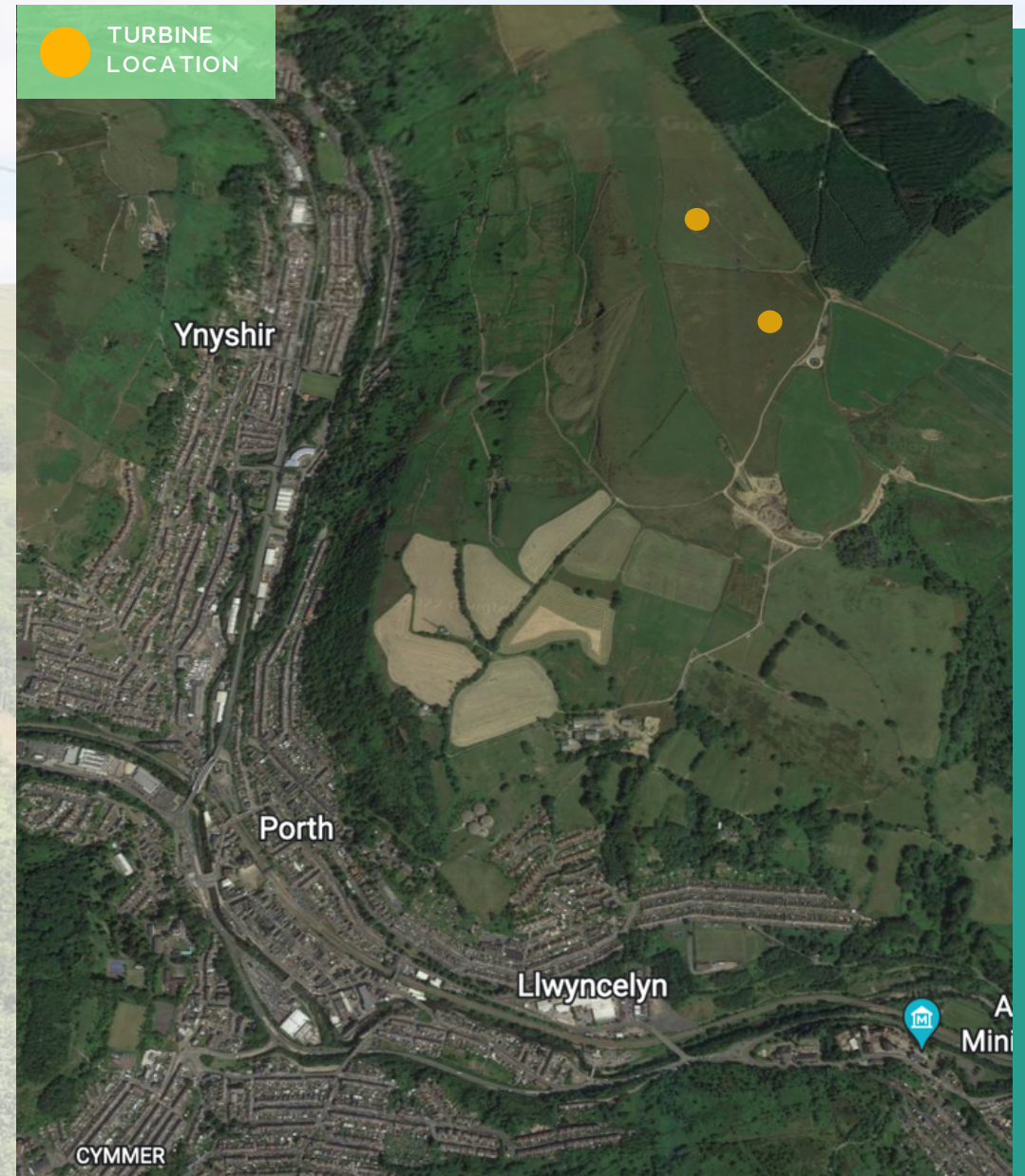


# KEY POINTS

- The two wind turbines will provide 5.5MW of electricity, which would be enough power for almost all of the houses in Porth. The energy generated will be made available to RCT for local use.
- We are working with RCT Council to see how we can best utilise the energy generated to help the area, by investing in feasibility studies to see how we can make this happen. One example is looking at electric vehicle charging for essential services in Ynyshir to reduce costs and emissions, and powering essential local authority buildings in the Porth area.
- We are always exploring new and innovative ways we can optimise energy opportunities in the Rhondda borough and look forward to sharing future plans for the area.

**"We are at a very exciting time for renewable energy generation, not only in Wales but across the world, and are proud to be bringing such schemes as Llwyncelyn into action"**

Martyn Popham, Director



# FAQs

## What are the benefits of wind power?

Wales has a fantastic wind resource and there are major benefits in capturing this low carbon energy, local generation means more money will be generated in the local community. It also gives increased Energy Security in very uncertain times

## Will the project really cut carbon emissions?

Yes, the scheme will have a capacity of 5.5MW which, in houses for instance, is 5,500 homes, reducing carbon emissions over the life of the project.

## Who is behind Llwynceilyn Wind?

Llwynceilyn Wind will be delivered by Bridgend based company CENIN. Visit [www.cenin.co.uk](http://www.cenin.co.uk) to see some examples of our previous, ground-breaking work across Wales.

## Do wind turbines produce noise?

The noise produced by wind turbines is carefully assessed throughout the planning process to make sure the scheme is suitable for the local area.

## Why renewable energy?

Local renewable energy generation is needed now more than ever. Not only will it help meet climate change targets, but there are also major benefits to energy security when energy is generated locally rather than importing oil and gas from other unstable countries. Locally produced green electricity (also known as the 'Electric Economy') will improve the quality of life for future generations.

## Will my energy bills be reduced?

Unfortunately, we cannot directly bill local homes, this is owing to complexities with how the grid works and regulations. However, this could become a possibility in the future.

## Who do I contact if I have any questions/concerns?

All contact information is in the box opposite, please get in touch if you have anything you would like to ask the team.



## Contact Us

[www.cenin.co.uk](http://www.cenin.co.uk)  
[@CENINGreenPower](https://twitter.com/CENINGreenPower)  
[info@cenin.co.uk](mailto:info@cenin.co.uk)

## Community Sponsorship

[jessk@cenin.co.uk](mailto:jessk@cenin.co.uk)

## Site Tours/Education

[joanneg@cenin.co.uk](mailto:joanneg@cenin.co.uk)

To subscribe to our project mailing list email [jessk@cenin.co.uk](mailto:jessk@cenin.co.uk)

*All information correct as of September 2022.*